

## Your new dryer

**Congratulations** – You have opted for a modern, high-quality domestic appliance of the Bosch brand. The condenser dryer is distinguished by its economical energy consumption.

Each dryer which leaves our factory is inspected thoroughly to ensure that it functions properly and is in perfect condition.

If you have any questions, please do not hesitate to contact our customer service.

### Environmental disposal

Dispose of packaging in an environmentally friendly manner.

This appliance has been identified in accordance with the European directive 2002/96/EG on Waste Electrical and Electronic Equipment – WEEE.

The directive specifies the framework for an EU-wide valid return and recycling of old appliances.

## Contents

	Page
■ Preparation	2
■ Setting programmes	2
■ After drying	4
■ About the washing ...	5
■ Servicing and cleaning	6
■ Overview of programmes	7
■ Installation	8
■ Technical specifications	9
■ Optional accessories	9
■ What to do if ...	10
■ Safety instructions	11

## Intended Use

- only in the household;
- only for drying textiles which have been washed with water.

- Do not leave children unattended near the dryer.
- Keep pets away from the dryer.

## Preparation

For installation see page 8

- Never use a damaged dryer! Notify customer service!

Check the dryer

- With dry hands only! Take hold of the plug with dry hands only!

Insert the mains plug

### Sort and put in the washing

- Take all objects out of the pockets. Look out for cigarette lighters! The drum must be empty before it is loaded!

See overview of programmes on page 7.

### Selecting + setting programme

Select drying programme ...

... and adjust

All buttons are sensitive, a gentle tap is adequate!

Select Start button

Select additional function	Status/ service displays	Programme selector

1

2

## Drying



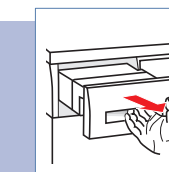
## Drying

- Drum and door may be hot.

3

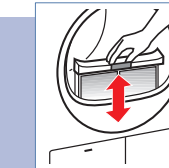
### Draining the condensation

- Pull out the container and keep in a horizontal position.
- Pour out the condensation.
- Insert the container until it locks into position.



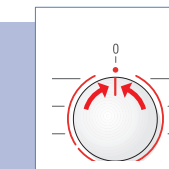
### Cleaning the fluff filter

- Open door, pull out filter and open.
- Remove fluff (run hand over filter).
- Close filter, re-insert and close door.



### Switching off the dryer

Set programme selector to 0 (Off).



### Removing washing

The automatic anti-crease function causes the drum to move at specific intervals, the washing remains loose and fluffy for an hour (two hours if the (Reduced Ironing) function is also selected – depending on model).

### Programme end

as soon as the light comes on



### Topping up or removing washing

- Open door, the drying process is terminated.
- Top up or remove washing and close door.
- If required, reselect programme and additional functions.
- Select (Start/Stop) button.

4

## About the washing ...

### Identifying textiles

#### Follow care information of the manufacturer!

- Dry at normal temperature.
- Dry at low temperature → also select (Low Heat).
- Do not dry by machine.

Do not dry the following textiles in the dryer.

- Airtight textiles (e.g. rubberised).
- Delicate fabrics (silk, synthetic curtains) → anti-creasing!
- Dripping wet washing → high energy consumption!

### Drying tips

- For uniform drying result, sort the washing according to fabric type and drying programme.
- Close zips, hooks and eyelets, button up quilt covers, tie fabric belts, apron strings, etc.
- Do not overdry the washing → risk of creasing! Leave the washing to air.
- Do not iron the washing immediately after drying, fold up the washing for a while → residual moisture will then be distributed evenly.
- Knitted textiles (e.g. T shirts, knitted underwear) often shrink when dried for the first time → Do not use the (Extra Dry) programme.
- The drying of starched washing should be limited → Starch leaves a coating which impairs drying.
- Use the time programme for a small load.

### Protection of the environment/Conservation of energy

- Before drying, thoroughly spin the washing in the washing machine → Higher spin speeds reduce the drying time and lower the energy consumption; also spin easy-care washing.
- Use the maximum recommended load, but do not exceed → Page 7, "Overview of programmes".
- Ensure that the room is well ventilated during the drying process.
- Clean the fluff filter after each drying process → Page 4.
- Keep the air cooler clean → Page 6 "Servicing and cleaning".
- Ensure that the cooling air flow is not obstructed → Do not block or seal the cooling grille.

## Servicing and cleaning



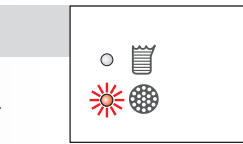
### Dryer housing, control panel, cooling grille

- Rub with a soft, damp cloth.
- Do not use any caustic cleaning agents/solvents.

3–4 times a year or if (Filter) flashes continuously after the fluff filter has been cleaned.

### Air cooler

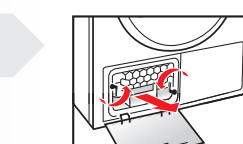
- Leave the dryer to cool down.
- Residual water may escape, place an absorbent cloth under the maintenance flap.



- Unlock the maintenance flap.
- Completely open maintenance flap.

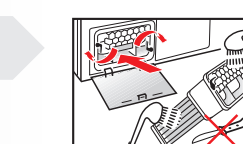


- Screw both locking levers towards each other.
- Pull out the air cooler.



- Do not damage the air cooler! Clean with warm water only; do not use hard/sharp-edged objects!

- Clean the air cooler completely, drain thoroughly.
- Clean the seals.
- Re-insert the air cooler, handle at the bottom!
- Unscrew both locking levers.



- Close the maintenance flap until it locks into position.



5

6



# Your new dryer

**Congratulations** – You have opted for a modern, high-quality domestic appliance of the Bosch brand. The condenser dryer is distinguished by its economical energy consumption.

Each dryer which leaves our factory is inspected thoroughly to ensure that it functions properly and is in perfect condition.

If you have any questions, please do not hesitate to contact our customer service.

## Environmental disposal

Dispose of packaging in an environmentally friendly manner.

This appliance has been identified in accordance with the European directive 2002/96/EG on Waste Electrical and Electronic Equipment – WEEE.



The directive specifies the framework for an EU-wide valid return and recycling of old appliances.

## Contents

	Page
■ Preparation	2
■ Setting programmes	2
■ After drying	4
■ About the washing ...	5
■ Servicing and cleaning	6
■ Overview of programmes	7
■ Installation	8
■ Technical specifications	9
■ Optional accessories	9
■ What to do if ...	10
■ Safety instructions	11

## Intended Use

- only in the household;
- only for drying textiles which have been washed with water.



- Do not leave children unattended near the dryer.
- Keep pets away from the dryer.

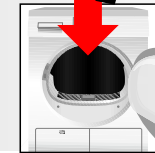
## Preparation



Never use a damaged dryer!  
Notify customer service!



With dry hands only!  
Take hold of the plug with dry hands only!



## Sort and put in the

Take all objects  
Look out for  
The drum must be empty

See overview of programmes on page 7.

## Selecting + setting pr

Select drying pr

Select additional function	Status/ service displays	Programme selector
	<ul style="list-style-type: none"> <li>• ☁</li> <li>• ☀</li> <li>• ☹</li> <li>• ☹→</li> <li>• ☹</li> <li>• 🌐</li> </ul>	<div style="display: flex; justify-content: space-between;"> <div> <p>Synthetics</p> </div> <div> <p>Cottons+Coloureds</p> </div> </div> <div style="text-align: center;"> </div> <div style="text-align: right;"> </div> <p>Time 20 min 40 min</p>
	<ul style="list-style-type: none"> <li>☁ ☀ ☹ ☹→ drying, iron dry, cupboard dry, fluff/finished</li> <li>☹ <b>Container</b> Empty condensation container</li> <li>🌐 <b>Filter</b> Clean fluff filter and/or air cooler</li> </ul>	
<ul style="list-style-type: none"> <li>■  <b>Low Heat</b></li> </ul>		<p>Reduced temperature for sensitive textiles ☹, e.g. polyacrylic, polyamide, elastane, acetate, for longer drying time.</p>

Information see page 8

Check the dryer

Insert the mains plug

Washing

Remove items from pockets, e.g. cigarette lighters! before it is loaded!

Programme

Select programme ... 1

... and adjust 2

Washing is sensitive, use a tap that is adequate!

Start button 3

# Drying

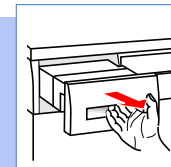


# Drying



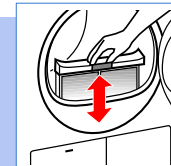
## Draining the condensation

1. Pull out the container and keep in a horizontal position.
2. Pour out the condensation.
3. Insert the container until it locks into position.



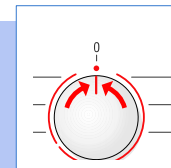
## Cleaning the fluff filter

1. Open door, pull out filter and open.
2. Remove fluff (run hand over filter).
3. Close filter, re-insert and close door.



## Switching off the dryer

Set programme selector to **0** (Off).



## Removing washing

The automatic anti-crease function causes the drum to move at specific intervals, the washing remains loose and fluffy for an hour (two hours if the **AI** (Reduced Ironing) function is also selected – depending on model).

**Programme end** as soon as the light comes on



## Topping up or removing washing

1. Open door, the drying process is terminated.
2. Top up or remove washing and close door.
3. If required, reselect programme and additional functions.
4. Select **Start/Stop** button.



Drum and door may be hot.

# About the washing ...



## Identifying textiles

### Follow care information of the manufacturer!

- Dry at normal temperature.
- Dry at low temperature → also select (Low Heat).
- Do not dry by machine.



Do not dry the following textiles in the dryer.

- Airtight textiles (e.g. rubberised).
- Delicate fabrics (silk, synthetic curtains) → anti-creasing!
- Dripping wet washing → high energy consumption!

## Drying tips

- For uniform drying result, sort the washing according to fabric type and drying programme.
- Close zips, hooks and eyelets, button up quilt covers, tie fabric belts, apron strings, etc.
- Do not overdry the washing → risk of creasing! Leave the washing to air.
- Do not iron the washing immediately after drying, fold up the washing for a while → residual moisture will then be distributed evenly.
- Knitted textiles (e.g. T shirts, knitted underwear) often shrink when dried for the first time → Do not use the (Extra Dry) programme.
- The drying of starched washing should be limited → Starch leaves a coating which impairs drying.
- Use the time programme for a small load.

## Protection of the environment/Conservation of energy

- Before drying, thoroughly spin the washing in the washing machine → Higher spin speeds reduce the drying time and lower the energy consumption; also spin easy-care washing.
- Use the maximum recommended load, but do not exceed → Page 7, "Overview of programmes".
- Ensure that the room is well ventilated during the drying process.
- Clean the fluff filter after each drying process → Page 4.
- Keep the air cooler clean → Page 6 "Servicing and cleaning".
- Ensure that the cooling air flow is not obstructed → Do not block or seal the cooling grille.

# Servicing and cleaning



Appliance must be switched off



## Dryer housing, control panel, cooling grille

- Rub with a soft, damp cloth.
- Do not use any caustic cleaning agents/solvents.

3–4 times a year or if (Filter) flashes continuously after the fluff filter has been cleaned.

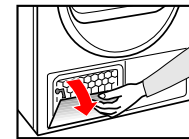


## Air cooler

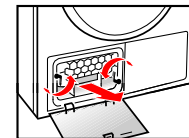
- Leave the dryer to cool down.
- Residual water may escape, place an absorbent cloth under the maintenance flap.



1. Unlock the maintenance flap.
2. Completely open maintenance flap.

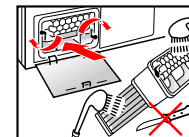


3. Screw both locking levers towards each other.
4. Pull out the air cooler

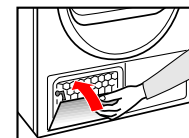


- Do not damage the air cooler!  
Clean with warm water only; do not use hard/sharp-edged objects!

5. Clean the air cooler completely, drain thoroughly.
6. Clean the seals.
7. Re-insert the air cooler, handle at the bottom!
8. Unscrew both locking levers.

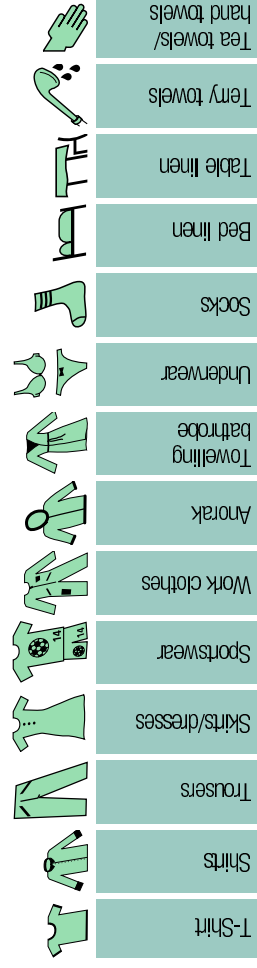


9. Close the maintenance flap until it locks into position.



# Overview of programmes

See also page 5



## After drying:

- iron the washing
- lightly iron the washing
- do not iron the washing
- mangle the washing

## Cottons+Coloureds

For cottons and coloureds made of cotton or linen.

max. 6 kg

(Iron Dry)														
(Cupboard Dry)														
(Cupboard Dry Plus)														
(Extra Dry)														

## Synthetics

For non-iron washing made of synthetic and blended fabrics, cotton.

max. 3 kg

(Iron Dry)														
(Cupboard Dry)														
(Very Dry)														

## Time

↓ 40 min / ↓ 20 min

For pre-dried, multi-ply, delicate textiles made of acrylic fibres or for individual small items. Also for subsequent drying.

WTE84100SK  
WTE84160SK  
0705.en  
90000 78774

Further information and a selection of our products can be found on our Internet page:  
<http://www.bosch-hausgeraete.de>

# Installation



- Included in standard delivery: dryer, operating and installation instructions.
- Mains plug not inserted!
- Check dryer for damage which may have been caused in transit.
- Dryer is heavy. Do not lift it by yourself!
- Beware of sharp edges!
- Do not install in a room where there is a risk of frost! Freezing water may result in damage.
- If in doubt, have a technician connect the appliance.
- Do not lift the dryer by projecting components (e.g. door) – risk of breakage!

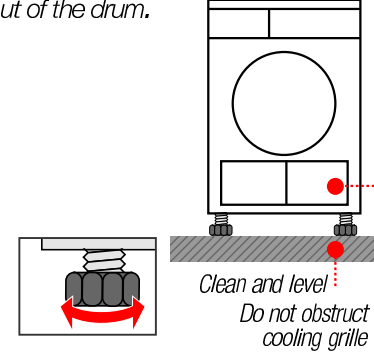
## 1.

### Installing the dryer



Take all accessories out of the drum. Drum must be empty!

- Mains plug must be accessible at all times!
- Place the dryer on a clean, level and firm surface!
- Do not obstruct cooling grille at the front of the dryer.
- Keep the area around the dryer clean.
- Align the dryer with the height-adjustable feet. Use a spirit level.
- Never remove the height-adjustable feet!



## 2.

### Mains connection

see Safety instructions, page 11.

- Connect the dryer correctly to an a.c. earthed socket.
- Mains voltage must correspond with the voltage specifications on the appliance rating plate (see page 9)!
- Wattage and required fuse are indicated on the appliance rating plate.

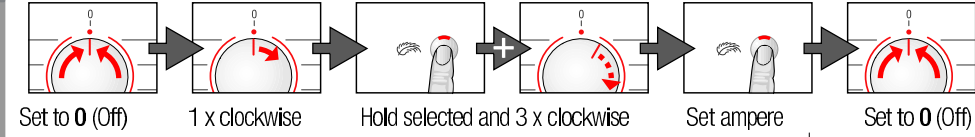
## 3.

### Switching over the connected load

10/16 Ampere



Check your socket fuse!



Feedback signals (depending on model)

10 A				off
16 A				on

Display field

If required, select repeatedly.

# Frost protection/ transportation



Do not operate the dryer if there is a risk of frost!



## Preparation

1. Empty condensation container, see page 4.
2. Set programme selector to any programme.
3. Select (Start/Stop) button → condensation is pumped into the container.
4. Wait 5 min., empty condensation container again.
5. Set programme selector to 0 (Off).

# Technical specifications

- Dimensions (D x W x H)	60 x 60 x 85 cm (height-adjustable)
- Weight (net)	approx. 45 kg
- Max. capacity	6 kg
- Condensation container	4.2 l
- Supply voltage	See appliance rating plate
- Connected load	
- Fuse	
- Product number (E-Nr.)	
- Production number (FD)	

The appliance rating plate is situated on the rear of the dryer.

**Consumption values** Specifications are approximate values determined under normal conditions. Fluctuations up to 10% are possible.

	Spin speed r.p.m. (residual humidity)	Drying time in min. with 8 min. cooling time		Energy consumption in kWh	
		10 A	16 A	10 A	16 A
<b>Cottons+Coloureds 6 kg</b>					
☒ (Cupboard Dry*)	1400 (approx. 50%)	100	80	3.0	3.0
	1000 (approx. 60%)	118	96	3.6	3.6
	800 (approx. 70%)	140	110	4.2	4.2
☒ (Iron Dry*)	1400 (approx. 50%)	76	56	2.2	2.2
	1000 (approx. 60%)	94	72	2.8	2.8
	800 (approx. 70%)	116	86	3.4	3.4
<b>Synthetics 3 kg</b>					
☒ (Cupboard Dry*)	800 (approx. 40%)	42	36	1.2	1.2
	600 (approx. 50%)	53	45	1.5	1.5

\* Test programmes according to DIN EN 61 121 and IEC 61 121

**Drum light** (depending on model)  
(Bulb E14, 15 W)

The drum is lit when the door is opened and closed or when the programme starts; it goes out automatically.

# Optional accessories

Order no.

WTZ 1110 **Connection fittings for condensation outlet**

The condensation is conveyed directly via a hose.

WTZ 11310 **Connection set for washing-drying column**

To save space, the dryer can be placed on a suitable washing machine which has the **same depth and width**.

WTZ 11300 Same as WTZ 11310 but with removable worktop.

WTZ 10290 **Cover for appliance underneath worktop**

The dryer can be built under the worktop in a line of kitchen units.

# What to do if ...



Repairs may be carried out by customer service or authorised technicians only!

Before you call customer service, please check whether you can correct the fault yourself. A technician will charge you for advice, even during the warranty period. Please give customer service the product number (E-Nr.) and the production number (FD) of the appliance (see inside of door).

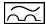
◇ (Start/Stop) indicator light does not come on.	Is the mains plug inserted? Programme selected? Check fuse in the house.
☒ (Container) and ◇ (Start/Stop) indicator lights are flashing.	Empty condensation container. If featured, check hose for condensation outlet.
⊗ (Filter) and ◇ (Start/Stop) indicator lights are flashing.	Clean air cooler, page 6 "Servicing and cleaning". Clean fluff filter, page 4.
Dryer does not start.	◇ (Start/Stop) button selected? Door closed? Programme set? Ambient temperature higher than 5 °C?
Water is running out.	Align dryer horizontally. Clean air cooler seal.
Door is opening by itself.	Press door until it "clicks" into position.
Degree of dryness was not reached or drying time too long.	Clean fluff filter/air cooler, page 4/6. Empty condensation container. Check water outlet (if featured). Ambient temperature above 30 °C → adequate ventilation. Cooling grille may be blocked → unblock. Unsuitable programme set? Page 7. Dryer installation too restricted? Provide air circulation. Power failure → restart dryer.
Washing clamp.	Use next higher drying programme or also the time programme, page 7. Warm washing feels damper than it actually is!
Humidity in the room is increasing significantly.	Ventilate room adequately. Cooling grille blocked? → Unblock. Ensure that the air cooler has been inserted.
One or more indicator lights for programme status are flashing.	Clean filter and air cooler, page 4/6. Check installation conditions, page 8. Switch off, leave to cool down, switch on again, restart programme.
Does the interior light (depending on model) work?	Open cover inside the appliance above the door (with a Torx 20 screwdriver) and change the bulb. Close the cover flap.

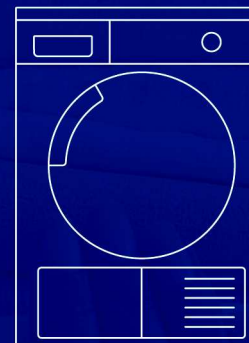
If you cannot correct a fault yourself or if a repair is required:

- Set programme selector to 0 (Off).
- Pull out the mains plug.

# Safety instructions



- Emergency**
- Immediately pull out mains plug or interrupt fuse.
- Use dryer ONLY ... NEVER ...**
- in the house.
  - for drying textiles.
  - use dryer for other purposes than those described above.
  - modify the technology or properties of the dryer.
- Hazards**
- Children and uninstructed persons must not use the dryer.
  - Do not leave children unattended near the dryer.
  - Keep pets away from the dryer.
  - Take all objects out of the pockets. Look out for cigarette lighters → risk of explosion!
  - Do not lean or sit on the door → risk of dryer tipping over!
  - Open the door carefully. Hot steam may escape.
- Installation**
- Frost damage possible below 0 °C.
  - Attach loose cables or hoses, otherwise risk of tripping.
- Mains connection**
- Connect the dryer correctly to an a.c. earthed socket.
  - Cable cross-section must be adequate.
  - Use residual-current-operated circuit-breaker with this symbol only: 
  - Mains plug and socket must match.
  - Do not use multiple plug/couplings and/or extension leads.
  - Do not take hold of the mains plug with damp hands.
  - Never pull the mains plug out of the socket by tugging the cable.
  - Do not damage the power cord.
  - Lay the power cord in such a way that it is not a tripping hazard.
- Operation**
- Load the drum with *washing only*. Check the contents before switching on the dryer.
  - Do not use the dryer if washing has come into contact with solvent or paint (e.g. hair spray, nail varnish remover, stain remover, cleaner's naphtha, etc.) → risk of fire/explosion!
  - Dust hazard (e.g. coal dust, flour): do not use the dryer → risk of explosion!
  - Do not use the dryer if the washing contains foam/rubber → elastic material may be destroyed and the dryer may be damaged by possible deformation of the foam.
  - Switch off the dryer when the programme ends.
  - Do not drink the condensation!
- Defect**
- Do not use the dryer if it is defective or considered to be defective; repairs by customer service only.
  - Do not use the dryer if the power cord is defective. To prevent hazards, have a defective power cord replaced by customer service only.
- Spare parts**
- For reasons of safety use original spare parts and accessories only.
- Disposal**
- Dryer: pull out the mains plug. Cut the power cord off the appliance. Dispose of the appliance at a public disposal centre.
  - Packaging: do not allow children to play with packaging parts → risk of suffocation!
  - All materials are environmentally friendly and recyclable. Dispose of in an environmentally friendly manner.



Dryer

en Operating and installation instructions



Read these instructions before switching on the dryer!  
Follow instructions on page 11!